

CERTIFICATE OF LOCATION OF GOVERNMENT CORNER

NORTHEAST Corner of Section 18, Township 108, Range 41, 5TH P.M.

STATE OF MINNESOTA, County of MURRAY

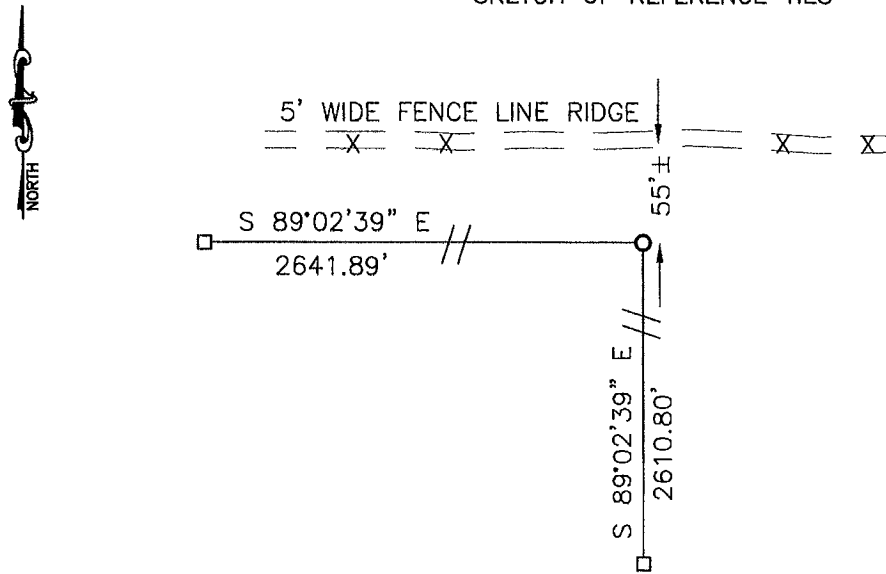
At the corner location shown on the sketch:

On _____ found a _____
DATE

left monument as found, lowered monument, removed monument (explain)

On 06-13-2008 placed a 1" IRON PIPE WITH SEAL #43844
DATE

SKETCH OF REFERENCE TIES



Minnesota State Plane Coordinate
System Murray County Datum
NAD83 (1996)

N: 216299.138
E: 490071.424

Statement of evidence relative to this corner location is on back of page.

I hereby certify that this document and the data contained herein was prepared by me or under my direct supervision.

James V. Johnson SIGNATURE 1/29/09 DATE

Registration No. 43844

Land Surveyor, Professional Engineer
 County Surveyor, County Engineer

OFFICE OF THE COUNTY RECORDER
County of _____

I hereby certify that this document was filed in the Co. Recorders office at _____ .M on the _____ day of _____ A.D. 20____

County Recorder James V. Johnson
By _____, Deputy

DOCUMENT NO. JUL 10 2009

Statement of Evidence

In 1861, L. G. M. Fletcher did the original survey of the township.

On June 13, 2008, Bueltel-Moseng Land Surveying set a 1" iron pipe with seal #43844, 18"± below surface. We set the corner at the intersection of the projected line from the Southeast corner through the East Quarter corner and projected line from the Northwest corner through the North Quarter corner of Section 18-108-41. The corner is 55'± south of an existing fence line (the owner of Government Lot 7 of Section 17 owns a 55' strip of Government Lot 6 of Section 8).